

International Payment Gateway

Connect Integration Guide

Contents

1.0	Introduction	4
2.0	Payment Process Options	4
2.1	Checkout Option 'Classic'	4
2.2	Checkout Option 'Combinedpage'	5
3.0	Getting Started	5
3.1	Checklist	5
3.2	ASP Example	5
3.3	PHP Example	6
3.4	Amounts for Test Transactions	7
4.0	Mandatory Fields	7
5.0	Optional Form Fields	8
6.0	Using Your Own Forms to Capture The Data	12
6.1	Payonly Mode	13
6.2	Payplus Mode	14
6.3	Fullpay Mode	14
6.4	Validity Checks	15
7.0	Additional Custom Fields	15
8.0	3D Secure	16
8.1	3D Secure Split Authentication	18
8.2	Dynamic 3D Secure Based on The Card Issuer's Country	19
9.0	MCC 6012 Mandate in UK	20
10.0	Data Vault	20
11.0	Solvency Information from Bürgel	21
12.0	Recurring Payments	22
13.0	Global Choice™ and Dynamic Pricing	22
14.0	Purchasing Cards	24
15.0	Transaction Response	25
15.1	Response to your Success/Failure URLs	25
15.2	Server-to-Server Notification	29
	Appendix I – How to Generate a Hash	30
	Appendix II – ipg-util.asp	31
	Appendix III – ipg-util.php	32
	Appendix IV – Currency Code List	33
	Appendix V – Payment Method List	35
	Appendix VI – PayPal	38
	Appendix VIII – MasterPass	39
	Appendix IX – Fraud Detect	41
	Appendix X – Local Payments™	42
	Appendix XI – UnionPay SecurePlus	47
	Appendix XII – China Domestic	48
	Appendix XIV – Korea Domestic	50
	Appendix XV - Debit Disbursement	51

Getting Support

There are different manuals available for the digital solutions provided by Fiserv. This Integration Guide will be the most helpful for integrating hosted payment forms or a Direct Post.

For information about settings, customization, reports and how to process transactions manually (by keying in the information) please refer to the User Guide Virtual Terminal.

If you have read the documentation and cannot find the answer to your question, please contact your local support team.

1.0 Introduction

The Connect solution provides a quick and easy way to add payment capabilities to your website.

Connect manages the customer redirections that are required in the checkout process of many payment methods or authentication mechanisms and gives you the option to use secure hosted payment pages which can reduce the burden of compliance with the Data Security Standard of the Payment Card Industry (PCI DSS).

This document describes how to integrate your website using Connect and provides step by step instructions on how to quickly start accepting payments from your webshop.

When making decisions on your way of integration, please consider that we do not recommend to use the hosted payment forms inside an iFrame since some Internet browsers do not allow cookies to be sent to the third-party hosts, moreover some features (for example: 3D Secure authentications) and some Alternative Payment methods that involve redirections to the third party services (for example, iDEAL or PayPal) do not allow displaying their screens within an iFrame.

Depending on your business processes, it can also make sense to additionally integrate our Web Service API solution (see Web Service API Integration Guide).

2.0 Payment Process Options

The Connect solution provides a number of different options for the payment process to support integrations where you handle most of the customer interactions on your own website up to integrations where you use ready-made form pages for the entire payment process.

In the scenarios where you prefer not to use a hosted form, you can submit the required customer data directly from your own form to Fiserv but please be aware that if you store or process sensitive cardholder data within your own application, you must ensure that your system components are compliant with the Data Security Standard of the Payment Card Industry (PCI DSS).

2.1 Checkout Option 'Classic'

The checkout option 'classic' splits the payment process into multiple pages where you can easily decide, what kind of information you want to get collected by one of the gateway's hosted forms or what you want to collect yourself within your webshop environment.

You can for example, let customers select their preferred payment method within your webshop and submit that payment method in your request to Connect – or if you should prefer not to send the payment method, the Connect solution will automatically show a payment method selection page to your customer where they can choose from all payment methods that are activated for your store.

With three different modes, you can define the range of data that shall be captured by the payment gateway:

- **payonly:** Shows a hosted page to collect the minimum set of information for the transaction (for example, cardholder name, card number, expiry date and card code for a credit card transaction)
- **payplus:** In addition to the above, the payment gateway collects a full set of billing information on an additional page
- **fullpay:** In addition to the above, the payment gateway displays a third page to also collect shipping information

The most important aspect around the usage of hosted payment pages is the security of sensitive cardholder data. When you decide to let your customers enter their credit card details on the page that we provide and host on our servers for this purpose, it facilitates your compliance with the Data Security Standard of the Payment Card Industry (PCI DSS) as the payment processing is completely hosted by Fiserv.

The hosted pages can be customized with your own logo, colors, and font types in order to make them fit to the look and feel of your webshop. Please refer to the User Guide Virtual Terminal to learn about how to make such customizations.

2.2 Checkout Option 'Combinedpage'

The checkout option 'combinedpage' consolidates the payment method choice and the typical next step (for example, entry of card details or selection of bank) in a single page which gets automatically optimized for different kinds of user devices, for example, PC, smartphone, tablet and so on.

This hosted page also shows your merchant name at the top and allows you to display a summary of the purchased items to your customer.

Please note that this checkout option has some functional limitations in comparison to the 'classic' option:

- Supported payment methods are currently limited to: Credit cards, Maestro, PayPal, iDEAL, SEPA Direct Debit, SOFORT Banking, giropay, MasterPass, Google Pay as well as payment methods covered by the Fiserv Local Payments product option
- It makes use of technical mechanisms that may not work with out-dated browser versions

3.0 Getting Started

This section provides a simple example on how to integrate your website using the "classic" checkout option in payonly Mode. Examples are provided using ASP and PHP. This section assumes that the developer has a basic understanding of his chosen scripting language.

3.1 Checklist

In order to integrate with the payment gateway, you must have the following items:

- Store Name

This is the ID of the store that was given to you by Fiserv.
For example: 10123456789

- Shared Secret

This is the shared secret provided to you by Fiserv.
This is used when constructing the hash value (see below).

3.2 ASP Example

The following ASP example demonstrates a simple page that will communicate with the payment gateway in payonly mode.

When the cardholder clicks **Submit**, they are redirected to the Fiserv secure page to enter the card details. After payment has been completed, the user will be redirected to the merchants receipt page. The location of the receipt page can be configured.

```
<!-- #include file="ipg-util.asp"-->

<html>
  <head><title>IPG Connect Sample for ASP</title></head>
  <body>
    <p><h1>Order Form</h1></p>

    <form method="post" action=" https://test.ipg-
online.com/connect/gateway/processing ">
```

```










</form>
</body>
</html>

```

The code presented in [Appendix II](#) represents the included file ipg-util.asp. It includes code for generating a hash as is required by Fiserv. The provision of a hash in the example ensures that this merchant is the only merchant that can send in transactions for this store.

Note, the POST URL used is for integration testing only. When you are ready to go into production, please contact Fiserv and you will be provided with the live production URL.

Note, the included file, ipg-util.asp uses a server side JavaScript file to build the hash. This file can be provided on request. To prevent fraudulent transactions, it is recommended that the hash is calculated within your server and JavaScript is not used like shown in the samples mentioned.

3.3 PHP Example

The following PHP example demonstrates a simple page that will communicate with the payment gateway in payonly mode.

When the cardholder clicks **Submit**, they are redirected to the Fiserv secure page to enter the card details. After payment has been completed, the user will be redirected to the merchants receipt page. The location of the receipt page can be configured.

```

<? include("ipg-util.php"); ?>

<html>
<head><title>IPG Connect Sample for PHP</title></head>
<body>
<p><h1>Order Form</h1>

<form method="post" action="https://test.ipg-
online.com/connect/gateway/processing">
  <input type="hidden" name="txntype" value="sale">
<input type="hidden" name="timezone" value="Europe/Berlin"/> <input
type="hidden" name="txndatetime" value="<?php echo getDate() ?>"/>
  <input type="hidden" name="hash_algorithm" value="HMACSHA256"/>

<input type="hidden" name="hashExtended" value="<?php echo createExtendedHash (
"13.00","978" ) ?>"/>
  <input type="hidden" name="storename" value="10123456789"/>
<input type="hidden" name="mode" value="payonly"/>
<input type="hidden" name="paymentMethod" value="M"/>
<input type="text" name="chargetotal" value="13.00"/>
<input type="hidden" name="currency" value="978"/>

  <input type="submit" value="Submit">
</form>
</body>
</html>

```


Note that the POST URL used in this example is for integration testing only. When you are ready to go into production, please contact Fiserv and you will be provided with the live production URL.

The code presented in [Appendix III](#) represents the included file ipg-util.php. It includes code for generating a hash as is required by Fiserv. The provision of a hash in the example ensures that this merchant is the only merchant that can send in transactions for this store.

3.4 Amounts for Test Transactions

When using our test system for integration, odd amounts (for example, 13.01 EUR or 13.99 EUR) can cause the transaction to decline as these amounts are sometimes used to simulate unsuccessful authorizations.

We therefore recommend using even amounts for testing purpose, for example, 13.00 EUR like in the example above.

4.0 Mandatory Fields

Depending on the transaction type, the following form fields must be present in the form being submitted to the payment gateway (X = mandatory field). Please refer to this Integration Guide's Appendixes for implementation details in relation to alternative payment methods and the other product options.

Field Name	Description, Possible Values and Format	Sale transaction	PreAuth*	PostAuth*	Void	PayerAuth**
txntype	'sale', 'preauth', 'postauth', 'void' or 'payer_auth' (the transaction type – please note the descriptions of transaction types in the User Guide Virtual Terminal) The possibility to send a 'void' using the Connect interface is restricted. Please contact your local support team if you want to enable this feature.	X (sale)	X (preauth)	X (postauth)	X (void)	X (payer_auth)
timezone	Time zone of the transaction in Area/Location format, for example, Africa/Johannesburg America/New_York America/Sao_Paulo Asia/Calcutta Australia/Sydney Europe/Amsterdam Europe/Berlin Europe/Dublin Europe/London Europe/Rome	X	X	X	X	X
txndatetime	YYYY:MM:DD-hh:mm:ss (exact time of the transaction)	X	X	X	X	X
hash_algorithm	This is to indicate the algorithm that you use for hash calculation. The possible values are: <ul style="list-style-type: none"> • HMACSHA256 • HMACSHA384 • HMACSHA512 Only one algorithm value should be used.	X	X	X	X	X
hashExtended	The extended hash needs to be calculated using all request parameters in ascending	X	X	X	X	X

	<p>order of the parameter names.</p> <p>When you are using Direct Post, there is also an option where you do not need to know the card details (PAN, CVV and Expiry Date) for the hash calculation. This will be managed with a specific setting performed on your store. Please contact your local support team if you want to enable this feature.</p> <p>An example of how to generate a hash is given in Appendix I.</p>					
storename	This is the ID of the store provided by Fiserv.	X	X	X	X	X
mode	'fullpay', 'payonly' or 'payplus' (the chosen mode for the transaction when using the 'classic' checkout option)	X	X			
chargetotal	This is the total amount of the transaction using a dot or comma as decimal separator, for example, 12.34 for an amount of 12 Euro and 34 Cent. Group separators like 1,000.01/1.000,01 are not allowed.	X	X	X	X	X
currency	The numeric ISO code of the transaction currency, for example, 978 for Euro (see examples in Appendix IV)	X	X	X		X
oid	The order ID of the initial action a PostAuth shall be initiated for.			X		
ipgTransactionId or merchantTransactionId	Exact identification of a transaction that shall be voided. You receive this value as result parameter, 'ipgTransactionId' of the corresponding transaction. Alternatively 'merchantTransactionId' can be used for the Void in case the merchant has assigned one.				X	

* The transaction types 'preauth' and 'postauth' only apply to the payment methods credit card, PayPal.

** The transaction type 'payer_auth' is only required if you want to split the 3D Secure authentication process from the payment transaction (authorization) process. See more information in the [3D Secure section](#) of this guide.

Please see a list of currencies and their ISO codes in [Appendix IV](#).

5.0 Optional Form Fields

Field Name	Description, Possible Values and Format
cardFunction	<p>This field allows you to indicate the card function in case of combo cards which provide credit and debit functionality on the same card. It can be set to 'credit' or 'debit'.</p> <p>The field can also be used to validate the card type in a way that transactions where the submitted card function does not match the card's capabilities will be declined. If you for example, submit "cardFunction=debit" and the card is a credit card, the transaction will be declined.</p>
checkoutoption	<p>This field allows you to set the checkout option to:</p> <ul style="list-style-type: none"> 'classic' for a payment process that is split into multiple pages, 'combinedpage' for a payment process where the payment method choice and the typical next step (for example, entry of card details or selection of

	bank) in consolidated in a single page.																										
comments	Place any comments here about the transaction.																										
customerid	<p>This field allows you to transmit any value, for example, your ID for the customer.</p> <p>Please note that for:</p> <ul style="list-style-type: none"> Direct Debit transactions, the Customer ID can be submitted to the bank, depending on the length of the Order ID. The maximum amount of characters that can be submitted to the bank is 78. Please note that this is not applicable when processing Direct Debit through the Fiserv Local Payments offering. iDEAL transactions, the Customer ID can be submitted in your request filled in with any relevant data which can be populated in a field in the iDEAL TransactionRequest to be displayed on your consumers' bank account statements. Please note that this is not applicable when processing iDEAL through the Fiserv Local Payments offering. 																										
dccInquiryId	Inquiry ID for a Dynamic Pricing request. Used to send the Inquiry ID you have obtained through a Web Service API call (RequestMerchantRateForDynamicPricing). This value will be used to retrieve the currency conversion information (exchange rate, converted amount) for this transaction.																										
dccSkipOffer	If the cardholder declines the currency conversion offer within your environment, the request parameter 'dccSkipOffer' can be set to 'true' so that the hosted consumer dialogue will automatically be skipped.																										
dynamicMerchantName	The name of the merchant to be displayed on the cardholder's statement. The length of this field should not exceed 25 characters. If you want to use this field, please contact your local support team to verify if this feature is supported in your country.																										
idealIssuerID Not Available in Australia	<p>This parameter can be used to submit the iDEAL issuing bank in case you let your customers select the issuer within your shop environment. If you do not pass this value for an iDEAL transaction, a hosted selection form will be displayed to your customer. Please note that this is not applicable when processing iDEAL through the Fiserv Local Payments offering.</p> <table> <tr> <th>IDEAL issuer</th><th>Value</th></tr> <tr> <td>ABN AMRO</td><td>ABNANL2A</td></tr> <tr> <td>ING</td><td>INGBNL2A</td></tr> <tr> <td>SNS Bank</td><td>SNSBNL2A</td></tr> <tr> <td>van Lanschot</td><td>FVLBNL22</td></tr> <tr> <td>Triodos Bank</td><td>TRIONL2U</td></tr> <tr> <td>Knab</td><td>KNABNL2H</td></tr> <tr> <td>Rabobank</td><td>RABONL2U</td></tr> <tr> <td>RegioBank</td><td>RBRBNL21</td></tr> <tr> <td>ASN Bank</td><td>ASNBNL21</td></tr> <tr> <td>Bunq</td><td>BUNQNL2A</td></tr> <tr> <td>Handelsbanken</td><td>HANDNL2A</td></tr> <tr> <td>Moneyou</td><td>MOYONL21</td></tr> </table>	IDEAL issuer	Value	ABN AMRO	ABNANL2A	ING	INGBNL2A	SNS Bank	SNSBNL2A	van Lanschot	FVLBNL22	Triodos Bank	TRIONL2U	Knab	KNABNL2H	Rabobank	RABONL2U	RegioBank	RBRBNL21	ASN Bank	ASNBNL21	Bunq	BUNQNL2A	Handelsbanken	HANDNL2A	Moneyou	MOYONL21
IDEAL issuer	Value																										
ABN AMRO	ABNANL2A																										
ING	INGBNL2A																										
SNS Bank	SNSBNL2A																										
van Lanschot	FVLBNL22																										
Triodos Bank	TRIONL2U																										
Knab	KNABNL2H																										
Rabobank	RABONL2U																										
RegioBank	RBRBNL21																										
ASN Bank	ASNBNL21																										
Bunq	BUNQNL2A																										
Handelsbanken	HANDNL2A																										
Moneyou	MOYONL21																										
invoicenumber	This field allows you to transmit any value, for example, an invoice number or class of goods. Please note that the maximum length for this parameter is 48 characters.																										

item1 up to item999

Line items are regular Connect integration key-value parameters (URL-encoded), where:

- the name is a combination of the keyword item and a number, where the number indicates the list position for example: item1
- the value is represented by a semicolon-separated list of values, where the position indicates the meaning of the list item property for example, <1>;<2>;<3>;<4>;<5>;<6>;<7>

The 'item1' to 'item999' parameters allow you to send basket information in the following format:

id;description;quantity;item_total_price;sub_total;vat_tax;shipping

'shipping' always has to be set to '0' for single line item. If you want to include a shipping fee for an order, please use the predefined id IPG_SHIPPING.

For other fees that you may want to add to the total order, you can use the predefined id IPG_HANDLING.

When you want to apply a discount, you should include an item with a negative amount and change accordingly the total amount of the order. Do not forget to regard the 'quantity' when calculating the values for example: subtotal and VAT since they are fixed by items.

Examples:

```
A;Product A;1;5;3;2;0
B;Product B;5;10;7;3;0
C;Product C;2;12;10;2;0
D;Product D;1;-1.0;-0.9;-0.1;0
IPG_SHIPPING;Shipping costs;1;6;5;1;0
IPG_HANDLING;Transaction fee;1;6.0;6.0;0;0
```

language

This parameter can be used to override the default payment page language configured for your merchant store.
The following values are currently possible:

Language	Value
Chinese (simplified)	zh_CN
Chinese (traditional)	zh_TW
Czech	cs_CZ
Danish	da_DK
Dutch	nl_NL
English (USA)	en_US
English (UK)	en_GB
Finnish	fi_FI
French	fr_FR
German	de_DE
Greek	el_GR
Hungarian	hu_HU
Italian	it_IT
Japanese	ja_JP
Norwegian (Bokmål)	nb_NO
Polish	pl_PL

	Portuguese (Brazil)	pt_BR
	Serbian (Serbia)	sr_RS
	Slovak	sk_SK
	Spanish	es_ES
	Swedish	sv_SE
mandateDate Not Available in Australia	<p>This field allows you to reference to the date of the original mandate when performing recurring Direct Debit transactions. The date needs to be submitted in format YYYYMMDD.</p> <p>Please note that this is a mandatory field for recurring Direct Debit transactions.</p>	
mandateReference Not Available in Australia	<p>This field allows you to transmit a Mandate Reference for Direct Debit payments. Please note the regulatory requisite to keep the Mandate Reference unambiguous.</p>	
mandateType Not Available in Australia	<p>This field allows you to process Direct Debit transactions that are based on mandates for recurring collections. The mandate type can be set to 'single' for single (one-off) debit collections, to 'firstCollection' when submitting the initial transaction related to a mandate for recurring Direct Debit collections, to 'recurringCollection' for subsequent recurring transactions or to 'finalCollection' for the last direct debit in a series of recurring direct debits. Transactions where this parameter is not submitted by the merchant will be flagged as a single debit collection.</p> <p>Please note that it is mandatory to submit a mandateReference in case of recurring collections.</p>	
mandateUrl Not Available in Australia	<p>When your store is enabled for SEPA Direct Debit as part of the Local Payments offering, this field allows you to transmit a valid URL of SEPA Direct Debit mandate to enable the Risk and Compliance department to access the details.</p> <p>Please note that it is mandatory to submit a mandateReference and a mandateDate together with a mandateUrl in case you manage SEPA Direct Debit mandates on your side in the combination with the Local Payments offering.</p>	
merchantTransactionId	<p>Allows you to assign a unique ID for the transaction. This ID can be used to reference to this transactions in a PostAuth or Void request (referencedMerchantTransactionId).</p>	
mobileMode	<p>If your customer uses a mobile device for shopping at your online store you can submit this parameter with the value 'true', when using the 'classic' checkout option. This will lead your customer to a payment page flow that has been specifically designed for mobile devices.</p>	
numberOfInstallments	<p>This parameter allows you to set the number of instalments for a Sale transaction if your customer pays the amount in several parts.</p>	
installmentsInterest	<p>This parameter allows you to choose, if instalment interest should be applied or not, the values "true" or "false" are currently possible.</p>	
installmentDelayMonths	<p>This parameter allows you to delay the first instalment payment for several months, values 2-99 are currently possible.</p>	
oid	<p>This field allows you to assign a unique ID for your order. If you choose not to assign an order ID, the Fiserv system will automatically generate one for you. Please note that for Direct Debit transactions, a maximum of 78 characters can be submitted to the bank.</p>	
paymentMethod	<p>If you let the customer select the payment method (For example, Mastercard, Visa, Direct Debit) in your shop environment or want to define the payment type yourself, transmit the parameter 'paymentMethod' along with your Sale or PreAuth transaction.</p> <p>If you do not submit this parameter, the payment gateway will display a drop-down menu to the customer to choose from the payment methods available for</p>	

	your shop. For valid payment method values please refer to Appendix V .
ponumber	This field allows you to submit a Purchase Order Number with up to 50 characters.
refer	This field describes who referred the customer to your store.
referencedMerchantTransactionID	This field allows to reference to a merchantTransactionId of a transaction when performing a Void. This can be used as an alternative to ipgTransactionId if you assigned a merchantTransactionId in the original transaction request.
referencedSchemeTransactionId	Credentials on file (COF) specific parameter. This field allows you to include in your request 'schemeTransactionId' that has been returned in the response of the initial transaction in order to provide a reference to the original transaction, which stored the credentials for the first time.
responseFailURL	The URL where you wish to direct customers after a declined or unsuccessful transaction (your Sorry URL) – only needed if not setup in Virtual Terminal/Customisation.
responseSuccessURL	The URL where you wish to direct customers after a successful transaction (your Thank You URL) – only needed if not setup in Virtual Terminal/Customisation.
reviewOrder Not Available in Australia	MasterPass-specific parameter for scenarios where the final amount needs to be confirmed by the customer after returning from the Wallet. Set the value for this parameter to 'true' in order to indicate that the final transaction amount needs to be reviewed by the cardholder.
reviewURL Not Available in Australia	MasterPass-specific parameter for scenarios where the final amount needs to be confirmed by the customer after returning from the MasterPass environment. Use this parameter to indicate where the customer shall be redirected to in order to review and complete the transaction after having clicked on "Finish shopping" within the Wallet.
shipping	This parameter can be used to submit the shipping fee, in the same format as 'chargetotal'. If you submit 'shipping', the parameters 'subtotal' and 'vattax' have to be submitted as well. Note that the 'chargetotal' has to be equal to 'subtotal' plus 'shipping' plus 'vattax'.
trxOrigin	This parameter allows you to use the secure and hosted payment form capabilities within your own application. Possible values are: <ul style="list-style-type: none"> 'MAIL' (for transactions where the payment details are captured manually and provided in written form the Card Code entry is not allowed) 'PHONE' (for transactions where you have received the order over the phone and enter the payment details yourself the Card Code entry is required) 'ECI' (for standard usage in an eCommerce environment where your customer enters the payment details).
unscheduledCredentialOnFileType	Credentials on file (COF) specific parameter. This field allows you to flag transactions as unscheduled credential on file type. Currently the valid values are: FIRST, CARDHOLDER_INITIATED or MERCHANT_INITIATED to advise the scenario if the credential is stored on your side.
vattax	This field allows you to submit an amount for Value Added Tax or other taxes, for example, GST in Australia. Please ensure the sub total amount plus shipping plus tax equals the charge total.

6.0 Using Your Own Forms to Capture the Data

If you decide to create your own forms, that is, Direct Post (not to use the ones provided and hosted by Fiserv), there are additional mandatory fields that you need to include. These fields are listed in the following sections, depending on the mode you choose.

Using Direct Post allows you to have full control over the look and feel of the form where your customers enter their card details for payment while simultaneously avoiding the need to have sensitive card data within your systems.

In addition, you should check if JavaScript is activated in your customer's browser and if necessary, inform your customer that JavaScript needs to be activated for the payment process.

Following Fields in grey are not available in Australia

6.1 Payonly Mode

After your customer has decided how to pay, you present a corresponding HTML-page with a form to enter the payment data as well as hidden parameters with additional transaction information.

In addition to the mandatory fields listed above, your form needs to contain the following fields (part of them can be hidden):

Field Name	Description, Possible Values and Format	Credit Card (+ Visa Debit/Electron/Delta)	SEPA Direct Debit	Maestro	Bancontact	UnionPay SecurePlus
cardnumber	Your customer's card number. 12–24 digits.	X		X	X	X
expmonth	The expiry month of the card (two digits)	X		X	X	(X) mandatory if credit card
expyear	The expiry year of the card (four digits)	X		X	X	(X) mandatory if credit card
cvm	The card code, in most cases on the backside of the card (three to four digits)	X		X as an optional field "if on card"		(X) mandatory if credit card
iban	Your customer's IBAN – International Bank Account Number (22 digits)		X			
bic	Your customer's BIC – Business Identifier Code (eight or 11 digits)		(X) mandatory if foreign IBAN			
bname	Name of the bank account owner that will be debited (alphanumeric characters, spaces, and dashes limited to 96)		X			

For the Local Payments method specific (mandatory/optional) fields please refer to [Appendix X](#).

For the China Domestic method specific (mandatory/optional) fields please refer to [Appendix XII](#).

For the Korea Domestic method specific (mandatory/optional) fields please refer to [Appendix XIV](#).

6.2 Payplus Mode

Using payplus mode, it is possible to additionally transfer billing information to the payment gateway. The following table describes the format of these additional fields:

Field Name	Possible Values	Description
bcompany	Alphanumeric characters, spaces and dashes limited to 96	Customers Company
bname	Alphanumeric characters, spaces and dashes limited to 96	Customers Name
baddr1	Limit of 96 characters, including spaces	Customers Billing Address 1
baddr2	Limit of 96 characters, including spaces	Customers Billing Address 2
bcity	Limit of 96 characters, including spaces	Billing City
bstate	Limit of 96 characters, including spaces	State, Province or Territory
bcountry	Two Letter Country Code	Country of Billing Address
bzip	Limit of 24 characters, including spaces	Zip or Postal Code
phone	Limit of 32 Characters	Customers Phone Number
fax	Limit of 32 Characters	Customers Fax Number
email	Limit of 254 Characters	Customers Email Address

6.3 Fullpay Mode

Using fullpay mode, it is possible to additionally transfer shipping information to the payment gateway. The billing information is as specified above. The following table describes the format of the shipping fields:

Field Name	Possible Values	Description
sname	Alphanumeric characters, spaces and dashes limited to 96	Ship-to Name
saddr1	Limit of 96 characters, including	Shipping Address Line 1

	spaces	
saddr2	Limit of 96 characters, including spaces	Shipping Address Line 2
scity	Limit of 96 characters, including spaces	Shipping City
sstate	Limit of 96 characters, including spaces	State, Province or Territory
scountry	Two letter country code	Country of Shipping Address
szip	Limit of 24 characters, including spaces	Zip or Postal Code

6.4 Validity Checks

Prior to the authorization request for a transaction, the payment gateway performs the following validation checks:

- The expiry date of cards needs to be in the future
- The Card Security Code field must contain three or four digits
- The structure of a card number must be correct (LUHN check)
- An IBAN must contain 22 digits
- A BIC needs to contain eight or 11 digits

If the submitted data should not be valid, the payment gateway presents a corresponding data entry page to the customer.

To avoid this hosted page when using your own input forms for the payment process, you can transmit the following additional parameter along with the transaction data:

```
full_bypass=true
```

In that case you get the result of the validity check back in the transaction response and can display your own error page based on this.

Please note, if the transaction is eligible for DCC (your store is configured for DCC and the customer is paying by credit card capable of DCC), your customer will be presented the DCC page despite having full_bypass set to true. This is due to regulatory reasons. You can avoid displaying of DCC choice pages by doing the DCC Inquiry yourself through our Web Service API (RequestMerchantRateForDynamicPricing).

7.0 Additional Custom Fields

You may want to use further fields to gather additional customer data geared toward your business specialty, or to gather additional customer demographic data which you can then store in your own database for future analysis. You can send as many custom fields to the payment gateway as you wish and they will get returned along with all other fields to the response URL.

Up to ten custom fields can be submitted in a way that they will be stored within the gateway so that they appear in the Virtual Terminal's Order Detail View as well as in the response to Inquiry Actions that you send through our Web Service API .

Field Name	Description, Possible Values and Format
customParam_key	<p>If you want to use this feature, please send the custom fields in the format customParam_key=value.</p> <p>The maximum length of a custom parameter is 100 characters.</p> <p>Example:<input type="hidden" name="customParam_color" value="green"/></p>

8.0 3D Secure

The Connect solution includes the ability to authenticate transactions using Verified by Visa, Mastercard SecureCode, American Express SafeKey, JCB J/Secure and Diners ProtectBuy to provide an additional security layer for online card transactions.

If your store is enabled for 3D Secure, all Sale or preAuth transactions that you initiate by posting an HTML form will by default go through the 3D Secure process without the need for you to do anything, That is cardholders with an enrolled card will see a page from the card issuer to enter the password unless the card issuer decides not to check it.

The generic fields to be considered:

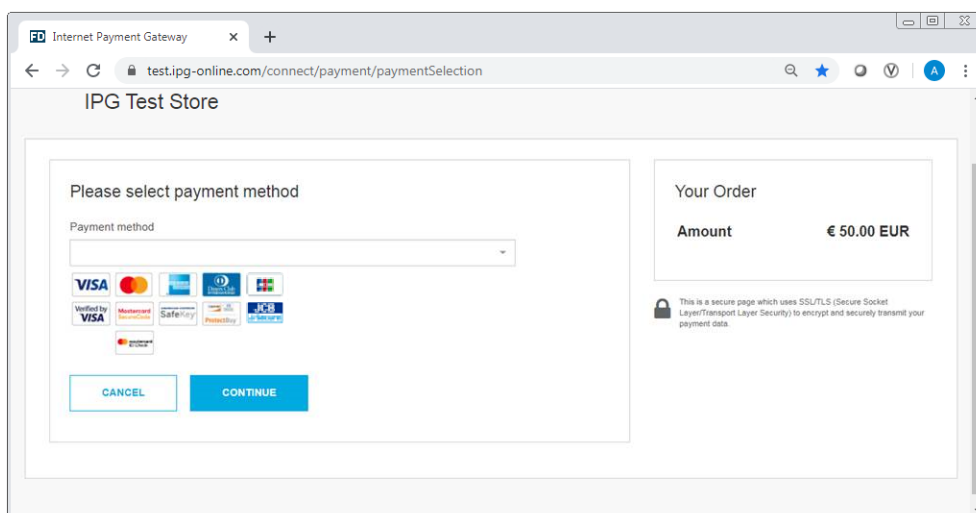
Field Name	Description, Possible Values and Format
authenticateTransaction	<p>Optional parameter to be set either to 'true' or 'false' to enable or disable 3D Secure authentication on a Transaction-by-Transaction basis.</p> <p>Example for a transaction with 3D Secure: <input type="hidden" name="authenticateTransaction" value="true"/></p> <p>Example for a transaction without 3D Secure: <input type="hidden" name="authenticateTransaction" value="false"/></p>
threeDSRequestorChallengeIndicator	<p>Optional parameter for EMV 3D Secure (2.0) to be set to: 01,02,03,04 in order to indicate the preferred type of authentication:</p> <ul style="list-style-type: none"> • 01 – no preference (set as default value) • 02 – no challenge requested • 03 – challenge requested 3DS requestor preference • 04 – challenge requested mandate
threeDSTransType	<p>The parameter for EMV 3D Secure (2.0) represents the type of purchased item, mandatory for Visa and Brazilian market, otherwise optional. If no specific value present in the transaction request, default value is used.</p> <ul style="list-style-type: none"> • 01 – Goods/Service Purchase (default value) • 03 – Check Acceptance • 10 – Account Funding • 11 – Quasi-Cash Transaction • 28 – Prepaid Activation and Load

scaExemptionIndicator1	<p>Optional parameter to request an exemption from Strong Customer Authentication (SCA) without the need to perform 3-D Secure authentication. Currently available values:</p> <ul style="list-style-type: none"> • Low Value Exemption • TRA Exemption • Trusted Merchant Exemption • SCP Exemption <p>Note this parameter is relevant only for the European merchants impacted by the PSD2 requirements.</p>
skipTRA	<p>This optional parameter allows you to use 3D Secure even if the transaction has been evaluated as low risk and would be eligible for an exemption. Currently available values:</p> <ul style="list-style-type: none"> • true • false <p>When your store has been set up with Transaction Risk Analysis (TRA) service, but you do want to force 3D Secure authentication for a certain transaction, set 'skipTRA' to 'true'.</p> <p>Note this parameter is relevant only for the European merchants impacted by the PSD2 requirements.</p>

In principle, it may occur that 3D Secure authentications cannot be processed successfully for technical reasons. If one of the systems involved in the authentication process is temporarily not responding, the payment transaction will be processed as a “regular” eCommerce transaction (ECI 7). **A liability shift to the card issuer for possible chargebacks is not warranted in this case.** If you prefer that such transactions shall not be processed at all, our technical support team can block them for your Store on request.

Credit card transactions with 3D Secure hold in a pending status while cardholders search for their password or need to activate their card for 3D Secure during their shopping experience. During this time when the final transaction result of the transaction is not yet determined, the payment gateway sets the Approval Code to „?:waiting 3dsecure“. If the session expires before the cardholder returns from the 3D Secure dialogue with his bank, the transaction will be shown as “N:-5103:Cardholder did not return from ACS”.

Please note that the technical process of 3D Secure transactions differs in some points compared to a normal transaction flow. If you already have an existing shop integration and plan to activate 3D Secure subsequently, we recommend performing some test transactions on our test environment.



8.1 3DSecure Split Authentication

If your business or technical processes require the cardholder authentication to be separated from the payment transaction (authorization), you can use the transaction type 'payer_auth'. This transaction type only performs the authentication (and stores the authentication results).

Example of a 'payer_auth' request:

```
<!-- #include file="ipg-util.asp"-->

<html>
<head><title>IPG Connect Sample for ASP</title></head>
<body>
<p><h1>Order Form</h1></p>

<form method="post" action=" https://test.ipg-
online.com/connect/gateway/processing ">
  <input type="hidden" name="txntype" value="payer_auth">
    <input type="hidden" name="timezone" value="Europe/Berlin"/>
    <input type="hidden" name="txndatetime" value="<%
getDateTIme() %>"/>
    <input type="hidden" name="hash_algorithm"
value="HMACSHA256"/>
    <input type="hidden" name="hashExtended" value="<% call
createExtendedHash( "13.00","978" ) %>"/>
    <input type="hidden" name="storename" value="10123456789" />
    <input type="hidden" name="mode" value="payonly"/>
    <input type="hidden" name="paymentMethod" value="M"/>
    <input type="text" name="chargetotal" value="13.00" />
    <input type="hidden" name="currency" value="978"/>
    <input type="hidden" name="authenticateTransaction"
value="true"/>
  <input type="submit" value="Submit">
</form>
</body>
</html>
```

Example of a 'payer_auth' response:

```
{txndate_processed=17/04/20 17:17:32,
ccbin=542606,
timezone=Europe/Berlin,
oid=C-2101f68a-45e9-4f3c-a6da-1337d5574717,
```

```

cccountry=N/A,
expmonth=12,
hash_algorithm=HMACSHA256
currency=978,
chargetotal=13.00,
approval_code=Y:ECI2/5:Authenticated,
hiddenSharedsecret=sharedsecret,
hiddenTxndatetime=2020:04:17-17:32:41,
expyear=2024,
response_hash=LarWYFSNgEToq13HlvyslX6hywi2T/nMn8jMY+1kxkI=,
response_code_3dsecure=1,
hiddenStorename=10123456789,
transactionNotificationURL=https://test.ipg-
online.com/webshop/transactionNotification,
tdate=1491824253,
ignore_refreshTime=on,
ccbrand=MASTERCARD,
txntype=payer_auth,
paymentMethod=M,
txndatetime=2020:04:17-17:32:41,
cardnumber=(MASTERCARD) ... 4979,
ipgTransactionId=84120276797,
status=APPROVED}

```

In a second step, you need to submit a payment transaction ('sale' or 'preauth') through the IPG Web Service API and reference it to the prior authentication. To review an example of a 'sale' transaction that refers to a previous 'payer_auth' transaction, please review the 3D Secure Split Authentication section, in the Web Service API integration guide.

8.2 Dynamic 3D Secure Based on The Card Issuer's Country

With the Dynamic 3D Secure product option you can exclude specific card transactions from the 3D Secure authentication based on a certain country selection (that is: issuing country) for example: Germany, Switzerland and Austria, while apply the standard 3D Secure authentication process for other transactions with card from other countries.

You can improve the consumer experience for the cardholders from the selected countries, while the chargeback risk for such transactions is still with you.

If you have ordered this product option, the countries that should be excluded from the 3D Secure authentication process can be set up for you by your local support team.

In case of some specific high-risk transactions, you can override this setting on transaction level and force the 3D Secure authentication on a Transaction-by-Transaction basis, even if the card used is issued in a country, which has been defined by you as a country where 3D Secure authentication should not be applied. In order to do it, you have to send the parameter 'override3dsCountryExclusion' set to "true" then the country setting will be ignored and the 3D Secure authentication process applied.

Field Name	Description, Possible Values and Format
override3dsCountryExclusion	<p>Optional parameter to be set either to 'true' or 'false'.</p> <p>Set to 'true' if for a transaction you would like to enforce 3D Secure authentication, despite this country possibly being exempted from authentication due to the merchant configured list of countries, where 3D Secure is not required.</p>

9.0 MCC 6012 Mandate in UK

Not Available in Australia

For U.K.-based Financial Institutions with Merchant Category Code 6012, Visa and Mastercard have mandated additional information of the primary recipient of the loan to be included in the authorization message.

If you are a UK 6012 merchant use the following parameters for your transaction request:

Field Name	Description, Possible Values and Format
mcc6012BirthDay	Date of birth in format dd.mm.yyyy
mcc6012AccountFirst6	First six digits of recipient PAN (where the primary recipient account is a card)
mcc6012AccountLast4	Last four digits of recipient PAN (where the primary recipient account is a card)
mcc6012AccountNumber	Recipient account number (where the primary recipient account is not a card)
mcc6012Surname	Surname
mcc6012Zip	Post Code

If you are a UK 6051 and 7299 merchant, you can reuse the MCC 6012 parameters to send the optional data to be included in the authorization message. However, please note that you have to either populate all the parameters or none otherwise the transaction will be declined.

10.0 Data Vault

With the Data Vault product option you can store sensitive cardholder data in an encrypted database in Fiserv's data center to use it for subsequent transactions without the need to store this data within your own systems.

If you have ordered this product option, the Connect solution offers you the following functions:

- Store or update payment information when performing a transaction**

Additionally send the parameter 'hosteddataid' together with the transaction data as a unique identification for the payment information in this transaction. Depending on the payment type, credit card number and expiry date or IBAN and BIC will be stored under this ID if the transaction has been successful. In cases where the submitted 'hosteddataid' already exists for your store, the stored payment information will be updated.

If you want to assign multiple IDs to the same payment information record, you can submit the parameter 'hosteddataid' several times with different values in the same transaction.

If you prefer not to assign a token yourself but want to let the gateway do this for you, send the parameter 'assignToken' and set it to 'true'. The gateway will then assign a token and include it in the transaction response as 'hosteddataid'.

If you have use cases where you need some of the tokens for single transactions only (for example, for consumers that check out as a "guest", use the additional parameter 'tokenType' with the values 'ONETIME' (card details will only be stored for a short period of time) or 'MULTIPAY' (card details will be stored for use in future transactions).

- **Initiate payment transactions using stored data**

If you stored cardholder information using the Data Vault option, you can perform transactions using the 'hosteddataid' without the need to pass the credit card or bank account data again.

Please note that it is not allowed to store the card code (in most cases on the back of the card) so that for credit card transactions, the cardholder still needs to enter this value. If you use Fiserv's hosted payment forms, the cardholder will see the last four digits of the stored credit card number, the expiry date and a field to enter the card code.

When using multiple Store IDs, it is possible to access stored card data records of a different Store ID than the one that has been used when storing the record. In that way you can for example, use a shared data pool for different distributive channels. To use this feature, submit the Store ID that has been used when storing the record as the additional parameter 'hosteddatastoreid'.

- **Avoid duplicate cardholder data for multiple records**

To avoid customers using the same cardholder data for multiple user accounts, the additional parameter 'declineHostedDataDuplicates' can be sent along with the request. The valid values for this parameter are 'true'/'false'. If the value for this parameter is set to 'true' and the cardholder data in the request is already found to be associated with another 'hosteddataid', the transaction will be declined.

See further possibilities with the Data Vault product in the Integration Guide for the Web Service API.

11.0 Solvency Information from Bürgel

Not Available in Australia

The Connect solution is integrated with Bürgel Wirtschaftsinformationen, a leading company in the field of business information.

This integration allows you to select the payment methods you offer to an individual customer based on Bürgel's information on the non-payment risk. Please see information on setting options in the User Guide Virtual Terminal.

If you have a contract with Bürgel and have ordered this product option, use the following parameters for your transaction requests:

Field Name	Description	Mandatory
valueaddedservices	Buergel	Please submit this parameter for all transactions where you want to use this feature
bfirstname, blastname, bname	Customer name	Yes, bfirstname and blastname or bname
baddr1	Customer address	Yes, format must be street and house number
bzip	Customer ZIP or Postal Code	Yes
bcity	Customer city	Yes
bcountry	Customer country	Yes, in the ISO alpha code format, for example, DE
bbirthday	Customer birthday	Not mandatory. Format: DD.MM.YYYY

If any of the mandatory address information is missing, the transaction request will be declined.

12.0 Recurring Payments

For credit card and PayPal transactions, it is possible to install recurring payments using Connect. To use this feature, the following additional parameters will have to be submitted in the request:

Field Name	Possible Values	Description
recurringInstallmentCount	Number between 1 and 999	Number of installments to be made including the initial transaction submitted
recurringInstallmentPeriod	day week month year	The periodicity of the recurring payment
recurringInstallmentFrequency	Number between 1 and 99	The time period between installments
recurringComments	Limit of 100 characters, including spaces	Any comments about the recurring transaction

Note that the start date of the recurring payments will be the current date and will be automatically calculated by the system.

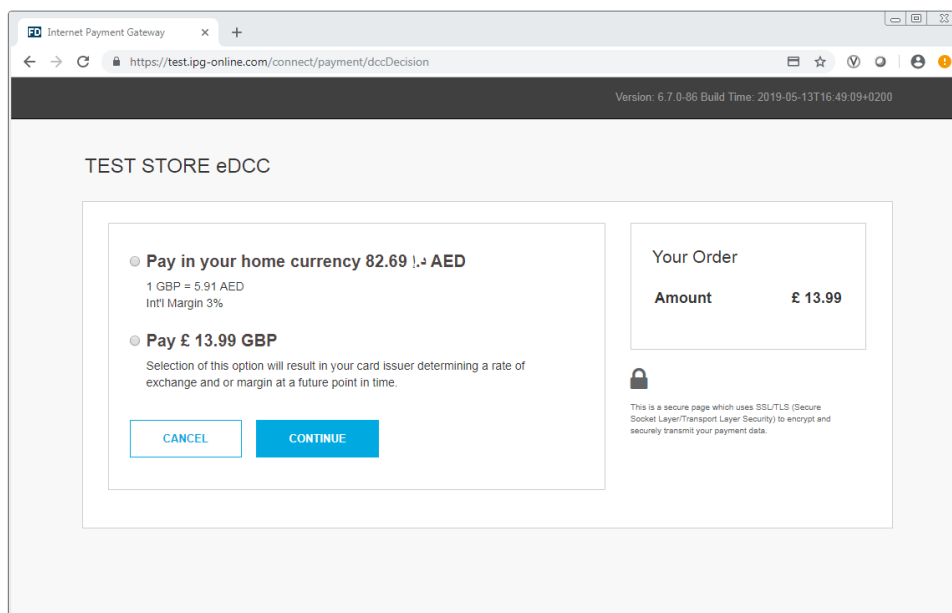
The recurring payments installed using Connect can be modified or cancelled using the Virtual Terminal or Web Service API.

13.0 Global Choice™ and Dynamic Pricing

Dynamic Currency Conversion is available in Australia, Dynamic Pricing is Not Available in Australia. For multicurrency needs, please contact the support team.

With Fiserv Global Choice™, foreign customers have the choice to pay for goods and services purchased online in their home currency when using their Visa or Mastercard credit card for the payment. The currency conversion is quick and eliminates the need for customers to mentally calculate the estimated cost of the purchase in their home currency. International Visa and Mastercard eCommerce customers can make informed decisions about their online purchases and eradicate any unexpected pricing or foreign exchange conversions on receipt of their monthly statements.

If your Store has been activated for this product option, the Connect solution automatically offers a currency choice to your customers if the card they use has been issued in a country with a currency that is different to your default currency.



Internet Payment Gateway x +
<https://test.ipg-online.com/connect/payment/dccDecision>
 Version: 6.7.0-86 Build Time: 2019-05-13T16:49:09+0200


TEST STORE eDCC

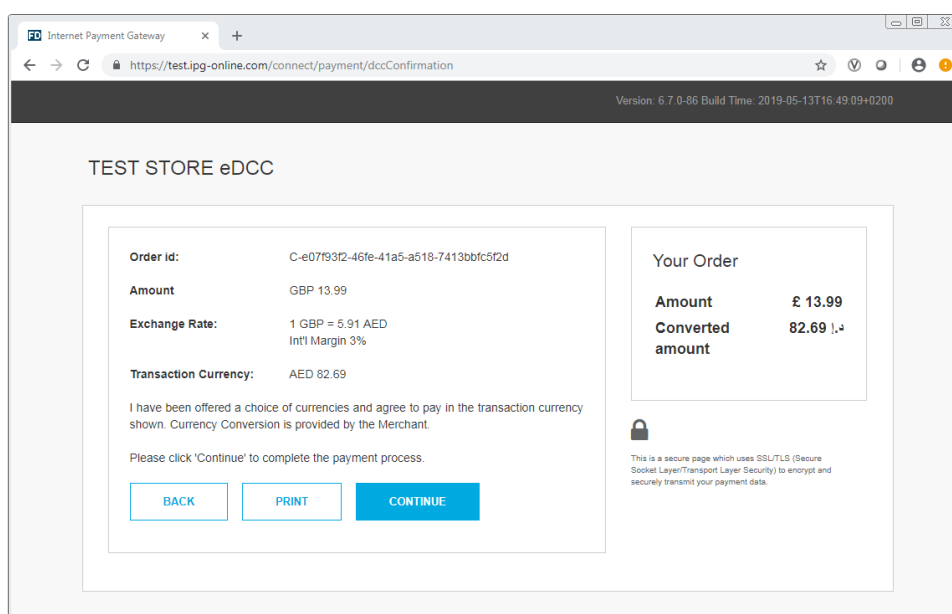
● **Pay in your home currency 82.69 AED**
 1 GBP = 5.91 AED
 Int'l Margin 3%

● **Pay £ 13.99 GBP**
 Selection of this option will result in your card issuer determining a rate of exchange and or margin at a future point in time.

Your Order

Amount **£ 13.99**

 This is a secure page which uses SSL/TLS (Secure Socket Layer/Transport Layer Security) to encrypt and securely transmit your payment data.



Internet Payment Gateway x +
<https://test.ipg-online.com/connect/payment/dccConfirmation>
 Version: 6.7.0-86 Build Time: 2019-05-13T16:49:09+0200

TEST STORE eDCC

Order id: C-e07f93f2-46fe-41a5-a518-7413bbfc5f2d

Amount GBP 13.99

Exchange Rate: 1 GBP = 5.91 AED
 Int'l Margin 3%

Transaction Currency: AED 82.69


I have been offered a choice of currencies and agree to pay in the transaction currency shown. Currency Conversion is provided by the Merchant.

Please click 'Continue' to complete the payment process.

Your Order

Amount **£ 13.99**

Converted amount **82.69 AED**

 This is a secure page which uses SSL/TLS (Secure Socket Layer/Transport Layer Security) to encrypt and securely transmit your payment data.

Please note that for compliance reasons Fiserv's Global Choice can only be offered on transactions that take place in full at that time (for example, Sale, Refund) and not on any delayed settlement (for example, pre/post auth, recurring) due to the fluctuation of the rate of exchange.

Another option for your foreign customers is to display all pricing within your online store in their home currency using our Dynamic Pricing solution. This solution removes the need for your company to set pricing in any other currency other than your home currency.

Please see the Integration Guide for our Web Service API for details on how to request the exchange rates.

If your Store has been activated for this product option and you want to submit the payment transaction through our Connect solution, you need to send the DCC Inquiry ID that you have received along with the exchange rate request in the parameter 'dccInquiryId'.

You can also use the 'dccInquiryId' for cases where Global Choice is being offered and handled on your side (for example, within a mobile app). If the cardholder declines the currency conversion offer within your

environment, the request parameter 'dccSkipOffer' can be set to 'true' so that the hosted consumer dialogue will automatically be skipped.

14.0 Purchasing Cards

Not available for Australia

Purchasing Cards offer businesses the ability to allow their employees to purchase items with a credit card while providing additional information on sales tax, customer code and so on. When providing specific details on the payment being made with a Purchasing card favourable addendum interchange rates are applied.

There are three levels of details required for Purchasing Cards:

- Level I – The first level is the standard transaction data; no enhanced data is required at this level
- Level II – The second level requires that data such as tax amount and customer code be supplied in addition to the standard transaction date. (Visa only have a level II option)
- Level III – The third level allows a merchant to pass a detailed accounting of goods and services purchased to the buyer. All the data for Level I and Level II must also be passed to participate in Level III. (Visa and Mastercard)

You can submit Level II and Level III data in your transaction request using the following parameters

Field Name	Description, Possible Values and Format
pcCustomerReferenceID	Merchant-defined reference for the customer that will appear on the customer's statement.
pcSupplierInvoiceNumber	Merchant-defined reference for the invoice, for example, invoice number.
pcSupplierVATRegistrationNumber	The Identification number assigned by the taxing authorities to the merchant.
pcTotalDiscountAmount	The total discount amount applied to a transaction (that is, total transaction percentage discounts, fixed transaction amount reductions or summarization of line item discounts).
pcTotalDiscountRate	The rate of the discount for the whole transaction.
pcVatShippingRate	The total freight/shipping amount applied to the transaction. Merchants can choose to deliver the contents of a single transaction in multiple shipments and this field reflects the total cost of those deliveries.
pcVatShippingAmount	The total freight/shipping amount applied to the transaction. Merchants can choose to deliver the contents of a single transaction in multiple shipments and this field reflects the total cost of those deliveries.
pcLineItemsJson	Line Item Details in JSON format. See table below for more information.

Purchasing Cards Line Item Details in JSON format:

Field Name	Description, Possible Values and Format
CommodityCode	A reference to a commodity code used to classify purchased item.
ProductCode	A reference to a merchant product identifier, the Universal Product Code (UPC) of purchased item.
Description	Represents a description of purchased item.
Quantity	Represents a quantity of purchased items.

UnitOfMeasure	Represents a unit of measure of purchased items.
UnitPrice	Represents mandatory data for Level III transactions.
VATAmountAndRate	Represents a rate of the VAT amount, for example, 0.09 (means 9%).
DiscountAmountAndRate	Represents a rate of the discount amount, for example, 0.09 (means 9%).
LineItemTotal	This field is a calculation of the unit cost multiplied by the quantity and less the discount per line item. The calculation is reflected as: [Unit Cost * Quantity] – Discount per Line Item = Line Item Total.

15.0 Transaction Response

15.1 Response to your Success/Failure URLs

Upon completion, the transaction details will be sent back to the defined 'responseSuccessURL' or 'responseFailURL' as hidden fields:

Field Name	Description, Possible Values and Format
approval_code	Approval code for the transaction. The first character of this parameter is the most helpful indicator for verification of the transaction result. 'Y' indicates that the transaction has been successful 'N' indicates that the transaction has not been successful "?" indicates that the transaction has been successfully initialized, but a final result is not yet available since the transaction is now in a waiting status. The transaction status will be updated at a later stage.
oid	Order ID
refnumber	Reference number
status	Transaction status, for example, 'APPROVED', 'DECLINED' (by authorization endpoint or due to fraud prevention settings), 'FAILED' (wrong transaction message content/parameters, and so on) or 'WAITING' (asynchronous Alternative Payment Methods).
txndate_processed	Time of transaction processing
ipgTransactionId	Transaction identifier assigned by the gateway, for example, to be used for a Void
tdate	Identification for the specific transaction
fail_reason	Reason the transaction failed
response_hash	Hash-Value to protect the communication (see note below)
processor_response_code	The response code provided by the backend system. Please note that response codes can be different depending on the used payment type and backend system. While for credit card payments, the response code '00' is the most common response for an approval, the backend for giropay transactions for example, returns the response code '4000' for successful transactions.
fail_rc	Internal processing code for failed transactions
terminal_id	Terminal ID used for transaction processing
ccbin	Six digit identifier of the card issuing bank
cccountry	Three letter alphanumeric ISO code of the cardholder's country (for example, USA, DEU, ITA and so on)

	Filled with "N/A" if the cardholder's country cannot be determined or the payment type is not credit card
ccbrand	Brand of the credit or debit card: MASTERCARD VISA AMEX DINERSCLUB JCB CUP CABAL MAESTRO RUPAY BCMC SOROCRED Filled with "N/A" for any payment method which is not a credit card or debit card
schemeTransactionId	Credentials on file (COF) specific parameter. Returned in the response by a scheme for stored credentials transactions to be used in subsequent transaction request for future reference.

For 3D Secure transactions only:

response_code_3dsecure	Return code indicating the classification of the transaction: 1 – Successful authentication (VISA ECI 05, Mastercard ECI 02) 2 – Successful authentication without AVV (VISA ECI 05, Mastercard ECI 02) 3 – Authentication failed/incorrect password (transaction declined) 4 – Authentication attempt (VISA ECI 06, Mastercard ECI 01) 5 – Unable to authenticate/Directory Server not responding (VISA ECI 07) 6 – Unable to authenticate/Access Control Server not responding (VISA ECI 07) 7 – Cardholder not enrolled for 3D Secure (VISA ECI 06) 8 – Invalid 3D Secure values received, most likely by the credit card issuing bank's Access Control Server (ACS) Please see note about blocking ECI 7 transactions in the 3D Secure section of this document.
------------------------	---

For Global Choice™ transactions only:

dcc_foreign_amount	Converted amount in cardholder home currency. Decimal number with dot (.) as a decimal separator
dcc_foreign_currency	ISO numeric code of the cardholder home currency. This transaction is performed in this currency String
dcc_margin_rate_percentage	Percent of margin applied to the original amount. Decimal number with dot (.) as a decimal separator
dcc_rate_source	Name of the exchange rate source (for example, Reuters Wholesale Inter Bank) String
dcc_rate	Exchange rate. Decimal number with dot (.) as a decimal separator.
dcc_rate_source_timestamp	Exchange rate origin time. Integer – Unix timestamp (seconds since 1.1.1970)
dcc_accepted	Indicates if the card holder has accepted the conversion offer (response value 'true') or declined the offer (response value 'false')

For iDEAL transactions only:

accountOwnerName	Name of the owner of the bank account that has been used for the iDEAL
------------------	--

	transaction
iban	IBAN of the bank account that has been used for the iDEAL transaction
bic	BIC of the bank account that has been used for the iDEAL transaction

For MasterPass transactions only:

redirectURL	When reviewOrder has been set to 'true', the response contains the URL that you need to finalize the transaction
-------------	--

For Fraud Detect transactions only:

fraudScore	Score returned based on Fraud Detect check
------------	--

When your store is enabled for SEPA Direct Debit as part of the Local Payments offering:

mandateReference	Mandate reference as returned for the first direct debit transaction
mandateDate	Date of the initial direct debit transaction as returned for the first transaction

For merchants using the Fiserv Global Merchant Acquiring model only:

associationResponseCode	The raw association value tells exactly how the issuer has responded to the transaction without any mapping done either by the authorization platform or the gateway. It will be returned only for Visa, Mastercard, Amex, and Discover
-------------------------	---

For merchants activated for the Mastercard real-time account updater service:

When your store is enabled for the Mastercard real-time account updater service on the gateway and you have the payment information vaulted on your side then when applicable the updates are sent as part of the gateway response and you have to react upon it accordingly That is: update the account number for a token when you store PAN and a token on your side.

updatedPAN	Updated primary account number
updatedExpirationDate	Updated expiration date
updatedAccountStatusType	Updated account status with possible values:

Account Status	Meaning/Action
ACCOUNT_CHANGED	Either the account number or account number along with the expiration date are being updated. Use the new account information going forward. The new account information should also be used in case of authorization reversals.
ACCOUNT_CLOSED	Closed account advice. This account has been closed. Try alternate method of payment on subsequent authorization or retries.
EXPIRY_CHANGED	Expiration date change. Use the new expiry information going forward. This should also be used in case of authorization reversals.
CONTACT_CARDHOLDER	Contact cardholder advice. Account updater cannot provide updates on

this account owing to restrictions from cardholder. Use an alternate method of payment or contact customer to get one.

accountUpdaterErrorCode	Error codes that indicate the system/server communication errors.
-------------------------	---

For merchants operating on the Fiserv Nashville and activated for the Visa or Mastercard real-time account updater service:

When you are processing on the Fiserv Nashville end-point and your store is enabled for the Visa real-time account updater service or for the MasterCard real-time account updater service on the gateway then you can expect the updates to be sent as part of the gateway response. When you have the payment information vaulted on your side then you have to react upon it accordingly That is: update the account number and the parameter 'hosteddataid' for a token when you store PAN and a token on your side.

updatedPAN	Updated primary account number
------------	--------------------------------

updatedExpirationDate	Updated expiration date
-----------------------	-------------------------

updatedAccountStatusType	Updated account status with possible values:
--------------------------	--

Account Status	Meaning/Action
ACCOUNT_CHANGED	Either the account number or account number along with the expiration date are being updated. Use the new account information going forward. The new account information should also be used in case of authorization reversals.
ACCOUNT_CLOSED	Closed account advice. This account has been closed. Try alternate method of payment on subsequent authorization or retries.
EXPIRY_CHANGED	Expiration date change. Use the new expiry information going forward. This should also be used in case of authorization reversals.
CONTACT_CARDHOLDER	Contact cardholder advice. Account updater cannot provide updates on this account owing to restrictions from cardholder. Use an alternate method of payment or contact customer to get one.

hosteddataid	Returned when the updates have been applied. New (TransArmor) token has to be used in place of the old/previous one. Note that the old/previous token will not be deleted but will be honored by the gateway till the old payment information (account number) will be honored by the scheme (Visa).
--------------	--

accountUpdaterErrorCode	Error codes that indicate the system/server communication errors.
-------------------------	---

Additionally when using your own error page for negative validity checks (full_bypass=true):

fail_reason_details	Comma separated list of missing or invalid variables. Note that 'fail_reason_details' will not be supported in case of payplus and fullpay mode
---------------------	--

invalid_cardholder_data	true – if validation of card holder data was negative false – if validation of card holder data was positive but transaction has been declined due to other reasons
-------------------------	--

In addition, your custom fields and billing/shipping fields will also be sent back to the specific URL.

Please consider when integrating that new response parameters may be added from time to time in relation to product enhancements or new functionality.

The parameter 'response_hash' allows you to recheck if the received transaction response has really been sent by Fiserv and can therefore protect you from fraudulent manipulations.

The value is created with a HMAC Hash using the following parameter string:

```
approval_code|chargetotal|currency|txndatetime|storename
```

Shared secret ('sharedsecret') will be used as a key in HMAC to calculating the hash with the above hash string.

The hash algorithm is the same as the one that you have set in the transaction request.

Please note that you have to implement the response hash validation, when doing so remember to store the 'txndatetime' that you have submitted with the transaction request in order to be able to validate the response hash. Furthermore, you must always use the https-connection (instead of http) to prevent eavesdropping of transaction details.

15.2 Server-to-Server Notification

In addition to the response you receive in hidden fields to your 'responseSuccessURL' or 'responseFailURL', the payment gateway can send server-to-server notifications with the above result parameters to a defined URL. This is especially useful to keep your systems in synch with the status of a transaction. To use this notification method, you can specify an URL in the Customisation section of the Virtual Terminal or submit the URL in the following additional transaction parameter 'transactionNotificationURL'.

Please note that:

- The Transaction URL is sent as received therefore please don't add additional escaping (for example, using %2f for a Slash (/))
- No SSL handshake, verification of SSL certificates will be done in this process
- The Notification URL needs to listen either on port 80 (http) or port 443 (https) – other ports are not supported

The response hash parameter for validation (using the same algorithm that you have set in the transaction request) 'notification_hash' is calculated as follows:

```
chargetotal|currency|txndatetime|storename|approval_code
```

Shared secret ('sharedsecret') will be used as a key in HMAC to calculating the hash with the above hash string.

Such notifications can also be set up for Recurring Payments that get automatically triggered by the gateway. Please contact your local support team to get a Shared Secret agreed for these notifications. You can configure your Recurring Transaction Notification URL in the Virtual Terminal (Customisation/ Store URL Settings).

In case of the recurring transactions the hash parameter is calculated as follows:

```
chargetotal|currency|txndatetime|storename|approval_code
```

Shared secret ('rcpSharedSecret') will be used as a key in HMAC to calculating the hash with the above hash string.

Appendix I – How to Generate a Hash

Transaction request values used for the hash calculation:

- chargetotal= 13.00
- currency= 978
- paymentMethod=M
- responseFailURL=https://localhost:8643/webshop/response_failure.jsp
- responseSuccessURL=https://localhost:8643/webshop/response_success.jsp
- sharedsecret=sharedsecret
- storename=10123456789
- timezone= Europe/Berlin
- transactionNotificationURL=https://localhost:8643/webshop/transactionNotification
- txndatetime=2020:04:17-17:32:41
- txntype=sale

Step 1. Extended hash needs to be calculated using all request parameters in ascending order of the parameter names. Join the parameters' values to one string with pipe separator (use only parameters' values and not the parameters' names).

```
stringToExtendedHash =
13.00|978|M|https://localhost:8643/webshop/response_failure.jsp|https://localhost:8643/webshop/response_
success.jsp|10123456789|Europe/Berlin|https://localhost:8643/webshop/transactionNotification|2020:04:17-
17:32:41|sale
```

Corresponding hash string does not include 'sharedsecret', which has to be used as the secret key for the HMAC instead.

Step 2. Pass the created string to the HMACSHA256 algorithm and using shared secret as a key for calculating the hash value.

```
HmacSHA256(stringToExtendedHash, sharedsecret)
```

Step 3. Use the value returned by the HMACSHA256 algorithm and submit it to our payment gateway in the given form.

```
8CVD62a88mwr/Nfc+t+CWB+XG0g5cqmSrN8JhFlQJVM=
```

```
<input type="hidden" name="hashExtended" value="
8CVD62a88mwr/Nfc+t+CWB+XG0g5cqmSrN8JhFlQJVM=" />
```

Appendix II – ipg-util.asp

```
<!-- google CryptoJS for HMAC -->
<script LANGUAGE=JScript RUNAT=Server src="script/cryptoJS/crypto-js.min.js"></script>
<script LANGUAGE=JScript RUNAT=Server src="script/cryptoJS/enc-base64.min.js"></script>
<script LANGUAGE=JScript RUNAT=Server>
    var today = new Date();
    var txndatetime = today.formatDate("Y:m:d-H:i:s");

    /*
        Function that calculates the hash of the following parameters:
        - chargetotal
        - currency
        - paymentMethod
        - responseFailURL
        - responseSuccessURL
        - sharedsecret
        - storename
        - timezone
        - transactionNotificationURL
        - txndatetime
        - txntype
    */

    function createExtendedHash(chargetotal, currency) {
        // Please change the storename to your individual Store Name
        var storename = "10123456789";
        // NOTE: Please DO NOT hardcode the secret in that script. For example read it from a
database.
        var stringToExtendedHash =
chargetotal|currency|paymentMethod|responseFailURL|responseSuccessURL|storename|timezone|transact
ionNotificationURL|txndatetime|txntype;

        var hashHMACSHA256 = CryptoJS.HmacSHA256(stringToExtendedHash, sharedSecret);
        var extendedhash = CryptoJS.enc.Base64.stringify(hashHMACSHA256);

        Response.Write(extendedhash);
    }

    function getDateTime() {
        Response.Write(txndatetime);
    }
</script>
```

Appendix III – ipg-util.php

```
<?php
// Timezone needs to be set
date_default_timezone_set('Europe/Berlin');
$dateTime = date("Y:m:d-H:i:s");

function getDateTime() {
    global $dateTime;
    return $dateTime;
}

/*
    Function that calculates the hash of the following parameters:
    - Store Id
    - Date/Time(see $dateTime above)
    - chargetotal
    - currency (numeric ISO value)
    - shared secret
*/
function createExtendedHash($chargetotal, $currency) {
    // Please change the store Id to your individual Store ID
    $storeId = "10123456789";
    // NOTE: Please DO NOT hardcode the secret in that script. For example read
it from a database.
    $sharedSecret = "sharedsecret";
    $separator = "|";

    $stringToHash = $storeId . $separator . getDateTime() . $separator .
$chargetotal . $separator . $currency;

    $hashSHA256 = CryptoJS.HmacSHA384(hashWithAllStrings, sharedSecret);
    $hash = CryptoJS.enc.Base64.stringify($hashSHA256);

    return $hash;
}
?>
```

Appendix IV – Currency Code List

Multicurrency Processing will be available in Australia in July 2020. Please contact the support team to express your interest.

Currency Name	Currency Code	Currency Number
Aruban Florin	AWG	533
Australian Dollar	AUD	036
Bahamian Dollar	BSD	044
Bahrain Dinar	BHD	048
Barbados Dollar	BBD	052
Belarusian Ruble	BYR	933
Belize Dollar	BZD	084
Bolívar Soberano	VES	928
Brazilian Real	BRL	986
Burundi Franc	BIF	108
Canadian Dollar	CAD	124
Cayman Islands Dollar	KYD	136
Chinese Renmibi	CNY	156
Croatian Kuna	HRK	191
Czech Koruna	CZK	203
Danish Krone	DKK	208
Dominican Peso	DOP	214
East Caribbean Dollar	XCD	951
Euro	EUR	978
Guyanese Dollar	GYD	328
Hong Kong Dollar	HKD	344
Hungarian Forint	HUF	348
Indian Rupee	INR	356
Israeli New Shekel	ILS	376
Jamaican Dollar	JMD	388
Japanese Yen	JPY	392
Kuwaiti Dinar	KWD	414
Lithuanian Litas	LTL	440
Malaysian Ringgit	MYR	458
Mexican Peso	MXN	484
Netherlands Antillean Guilder	ANG	532
New Zealand Dollar	NZD	554
Norwegian Krone	NOK	578

Omani Rial	OMR	512
Polish Zloty	PLN	985
Pound Sterling	GBP	826
Romanian New Leu	RON	946
Russian Ruble	RUB	643
Saudi Rihl	SAR	682
Serbian Dinar	RSD	941
Singapore Dollar	SGD	702
South African Rand	ZAR	710
South Korean Won	KRW	410
Surinamese Dollar	SRD	968
Swedish Krona	SEK	752
Swiss Franc	CHF	756
Taiwan Dollar	TWD	901
Trinidad and Tobago Dollar	TTD	780
Turkish Lira	TRY	949
UAE Dirham	AED	784
US Dollar	USD	840

Appendix V – Payment Method List

If you let your consumer select the payment method in your website or want to define the payment method yourself, submit the parameter 'paymentMethod' in your transaction request. If you do not submit this parameter, the gateway will display a hosted page to the consumer to choose from the payment methods that are enabled for your store and supported for the combination of the consumer's country and the transaction currency.

Payment Method	Value
Alipay*	aliPay
Alipay (China Domestic)	aliPay_domestic
American Express	A
Argencard (local Argentinian brand)	ARGENCARD
Asian local payment methods through Razer Merchant Services	asian_apm
Automatica (local Argentinian brand)	AUTOMATICA
Bancontact	BCMC
BBPS (local Argentinian brand)	BBPS
Boleto Bancário*	boleto
Cabal	CA
Cabal (local Argentinian brand)	CABAL_ARGENTINA
Cetelem (local Argentinian brand)	CETEM
Clarín 365 (local Argentinian brand)	CLARIN_365
Club la Nación (local Argentinian brand)	CLUB_LA_NACION
Consumax (local Argentinian brand)	CONSUMAX
Coopeplus (local Argentinian brand)	COOPEPLUS
Credigüia (local Argentinian brand)	CREDIGUIA
Dina Card (local Serbian brand)	DI
Diners	C
Elebar (local Argentinian brand)	ELEBAR
ELO (local Brazilian brand)	EL
eps*	eps
Equated Monthly Installments (EMI)	emi
Falabella CMR (local Argentinian brand)	FALABELLA_CMR
Favacard (local Argentinian brand)	FAVACARD
Finnish Online Banking Transfer (Verkkopankki)	finlandOnlineBanking
Giropay	giropay
Google Pay on the web	googlePay
Grupar (local Argentinian brand)	GRUPAR
Hiper (local Brazilian brand)	hiper

HiperCard (local Brazilian brand)	hipercard
iDEAL	ideal
Italcred (local Argentinian brand)	ITALCRED
JCB	J
Kadicard (local Argentinian brand)	KADICARD
Korean Payment Service (Korea Domestic)	kps
Local Wallets India	indiawallet
Maestro	MA
Maestro UK	maestroUK
Mastercard	M
MasterPass	masterpass
Mira (local Argentinian brand)	MIRA
MyBank*	mybank
Naranja (local Argentinian brand)	NARANJA
Nativa (local Argentinian brand)	NATIVA
Netbanking (India)	netbanking
Nevada (local Argentinian brand)	NEVADA
PayLater by ICICI Bank	payLater
PayPal	paypal
Patagonia 365 (local Argentinian brand)	PATAGONIA365
Paysafecard*	paySafeCard
POLi*	poli
Przelewy24 (P24)*	przelewy24
Pyme Nacion (local Argentinian brand)	PYME_NACION
Qida (local Argentinian brand)	QIDA
RuPay	RU
SafetyPay*	safetypay
Santander (Online Banking)*	santander
Santander Cash (Cash Payment)*	santanderCash
SEPA Direct Debit	debitDE
SEPA Direct Debit*	direct_debit-apm
SOFORT Banking (SOFORT Überweisung)	sofort
Sorocred	SO
Tarjeta Shopping (local Argentinian brand)	TARJETA_SHOPPING
Tarjeta Sol (local Argentinian brand)	TARJETA_SOL
Trustly*	trustly
TrustPay*	trustPay

Tuya (local Argentinian brand)	TUYA
UnionPay	CUP
UnionPay (China Domestic)	CUP_domestic
Visa (Credit/Debit/Electron/Delta)	V
WeChat Pay*	wechat-apm

*Only supported in a collecting model through the Fiserv Local Payments offering.

Appendix VI – PayPal

Not Available in Australia

Refer to the following information when integrating PayPal as a payment method.

Transaction types mapping

Connect Transaction Type (txntype)	PayPal Operation
Sale	SetExpressCheckoutPayment (sets PaymentAction to Authorization in SetExpressCheckout and DoExpressCheckoutPayment requests)
Preauth	GetExpressCheckoutDetails
sale – with additional parameters for installing a Recurring Payment	DoExpressCheckoutPayment*
Postauth	DoCapture (,DoReauthorization)
Void	DoVoid

Address Handling

If you pass a complete set of address values within your request to Connect (name, address1, zip, city and country within billing and/or shipping address), these values will be forwarded to PayPal, setting the PayPal parameter 'addressOverride' to '1'.

Please note that it is an eligibility requirement for PayPal's Seller Protection that the shipping address will be submitted to PayPal.

If you submit no or incomplete address data within the Connect request, no address data will be forwarded to PayPal and the PayPal parameter 'addressOverride' will not be set.

Regardless of that logic, the payment gateway will always store the shipTo address fields received from PayPal in the GetDetails request in the ShippingAddress fields, possibly overwriting values passed in the request to Connect (such overwriting depends on the above logic).

* If you want to use PayPal's Reference Transactions feature for recurring payments, please contact PayPal upfront to verify if your PayPal account meets their requirements for this feature.

Recurring Payment Transaction

You have to submit a SALE transaction request with the corresponding parameters to install the recurring payments. The first transaction is always conducted immediately along with the request.

The subsequent transactions are executed by the Gateway's scheduler, through the API Web Service, as defined during the initial SALE transaction with the installation.

Appendix VIII – MasterPass

Not Available in Australia

Refer to the following information when integrating MasterPass as a payment method.

MasterPass is a digital wallet solution provided by participating banks and supported by Mastercard. When purchasing online, customers log in to their MasterPass account and select a stored card for the payment. MasterPass allows users to store Mastercard, Maestro, VISA, American Express and Diners cards. Please note that your customers will however only be able to select the card brands that your Store has been set up for in general.

To learn more about MasterPass, please visit www.masterpass.com.

Checkout Process with MasterPass

The checkout process with MasterPass can be initiated with a “BUY WITH MasterPass” button that you place on your website either as a specifically alternative checkout option or next to other payment methods that you offer.

When consumers click this button, you construct a ‘sale’ or ‘preauth’ request with the parameter ‘paymentMethod’ set to ‘masterpass’.

This will take your customer to the MasterPass login screen, from there to the subsequent pages of the digital wallet and finally back to your web shop (responseSuccessURL, responseFailURL or reviewURL).

Alternatively you can let your customers select the payment method on the gateway’s hosted payment method selection page. If you prefer that option, simply do not submit the parameter ‘paymentMethod’.

Good to Know Prior the Integration

- The **Billing Address** for a MasterPass transaction is associated with the card stored inside the wallet thus even if you should use the payment gateway’s ‘payplus’ or ‘fullpay’ mode, there will be no additional entry form for the Billing Address when a customer uses MasterPass. The Billing Address stored in the wallet will also automatically override any billing address data you may send within your transaction request to the gateway. You will always receive the Billing Address from the wallet in the transaction response - even in ‘payonly’ mode, which is different compared to other payment methods
- If you use the gateway’s ‘fullpay’ mode, the **Shipping Address** can be selected by the customer inside the wallet (no additional page for that from the gateway). If you use the ‘payonly’ or ‘payplus’ mode, the Shipping Address selection in the wallet gets omitted as a non-required step. Thus you can send the Shipping Address with your request and your customers will not have to select/provide it again inside the wallet (it reduces the number of steps in the transaction flow when purchasing for example, software products available as downloads where no shipping address is really required)
- For the cases where the shipping address and thus **Shipping Fee** is not clear yet when your customer enters the wallet process by clicking the ‘BUY WITH Masterpass’ button, you can send additional parameters in your transaction request which allow you to present a final confirmation page with the final amount to your customers when they return from the wallet. The parameter ‘reviewOrder’ needs to be set to ‘true’ in order to indicate that the final transaction amount needs to be reviewed by your customer before completion. In addition you will need to provide the URL for your confirmation page in the parameter ‘reviewURL’. When your customer confirms the final amount on this page, you will need to send a request to finalize the transaction to the ‘redirectURL’ that you received in your response from the gateway. This final request needs to include: oid, ipgTransactionId, subtotal, shipping, vattax, chargetotal, currency and hashExtended

Note that you can also set a static ‘reviewURL’ through the Virtual Terminal (in Customisation/Online store integration/Define the URLs for the integration with your online store section)

- When your Store is activated for **3D Secure**, these settings will also apply to your MasterPass transactions. In the specific case of MasterPass, the authentication process will however be handled by Mastercard inside the wallet (MasterPass Advanced Checkout), where supported programmes are limited to Mastercard SecureCode and Verified by Visa (no American Express SafeKey). However, the parameter 'authenticateTransaction' can also be used to dynamically steer the behaviour for MasterPass for example, depending on the purchase amount. If you submit the parameter 'authenticateTransaction' and set it to 'false', the MasterPass transaction will be initiated using the MasterPass Basic Checkout which doesn't include 3D Secure authentication

Note that merchants requesting liability shift for MasterPass transactions should use the MasterPass Advanced Checkout/3D Secure and must enable 3D Secure service such that it is invoked within the MasterPass wallet

- The **Card Code** (CVV2/CVC2/4DBC) is not required for MasterPass transactions unless otherwise required in network rules. At the time when a customer adds a card to the wallet, the Card Code gets entered and checked once. No further Card Code entry is required from your customers. Requesting a CVC2/CVV/4DBC is allowed when required by network rules
- **Address Verification Service** (AVS) is handled for MasterPass transactions in the same way as for any other card transaction, however as the billing address is associated with a card and stored inside the wallet, the AVS result is based on the address stored inside the wallet and not the billing address provided by your customer in your web shop
- MasterPass is not available for **Betting/Casino Gambling** merchants (MCC 7995)

Activate MasterPass for your Test Store

- Obtain the credentials for the sandbox consumer accounts listed in the [online documentation](#) provided by Mastercard
- Make sure your payment gateway test Store ID has been enabled for MasterPass

Appendix IX – Fraud Detect

Not Available in Australia

Refer to the following information when you are signed up to Fiserv Fraud Detect product to have card transactions reviewed for a fraud scoring.

You can submit a payment transaction to the gateway, which routes it to the appropriate authorization front-end. The gateway receives the authorization response. If an approval is received, the gateway submits the transaction to Fraud Detect including authorization response details (for example, AVS/Card Code match). Fraud Detect returns a fraud score (between 1–1000) to the gateway and depending on how the risk tolerance level is set for your store (default 500) the transaction is either approved or voided and declined. Refer to the Virtual Terminal Guide to learn more about the way how to set the risk tolerance level for your store.

In case you use the Fraud Detect product and want to pass mobile device details for the scoring, you need to pass these with the following parameter naming:

- customParam_deviceRiskId
- customParam_deviceRiskAPIKey
- customParam_deviceRiskHost

Example:

```
<input type="hidden" name="customParam_deviceRiskId" value="*****"/>
```

These fields are handled in the same way as other optional request parameters. The gateway stores these parameters and passes them on to Fraud Detect. These parameters have no impact on the transaction processing flow.

Appendix X – Local Payments™

Refer to the following information when you have ordered this product option and your store is enabled for the Local Payments offering.

The Local Payments solution offers a unique combination of global coverage, a single contracting and integration experience, and a broad and expanding portfolio of local payment methods.

Local Payments, also often referred to as Alternative Payment Methods, are defined as payment transactions where neither credit/debit cards or paper currencies are used as the form of payment. These payment methods are primarily used in eCommerce and mCommerce transactions, although some solutions are making a push for adoption at point of sale locations. In many markets, they are more commonly used than credit/debit cards.

Local Payments differ from card/association processing in a number ways. They are generally designed to meet local needs and used in one or a limited number of markets. Unlike traditional credit/debit card processing, pricing across these payment methods is not uniform and retail pricing depend on local costs and merchant industries (for example, high-risk vs. low-risk). Local Payments offerings and user experiences also vary greatly, though most are quite different from debit/credit user experiences.

There are over 300 local payment methods in use across the globe. Most of these fall into various categories: Online Banking, Direct Debits, Direct Carrier Billing, Cash on Delivery, Invoice/Installments, eWallets /mWallets, Cash/Voucher Payments and Payouts.

Consumer demand and preference are driving the growth in new methods of payment across the globe. In fact, local payment methods are growing more rapidly than major card schemes, and merchant demand for non-card (credit/debit) methods of payment is on the rise. These new payment methods deliver many benefits to both merchants and consumers.

Local Payments help you reach and securely process payments from a broader base of consumers in each local market, reduce shopping cart abandonment/improve conversion and improve customer experiences. They enable more consumers to easily and confidently shop online (That is provide easy access to secure payment methods for those that are unbanked and/or without credit or debit cards), expand their ability to access international merchants and enable them to 'pay their way,' all of which improve their shopping experiences and overall satisfaction.

Initiating a Sale Transaction

A Sale transaction for most Local Payments requires a direct interaction with the consumer who needs to be redirected to the payment method's screens (for example, the login page of the consumer's bank or a wallet provider) and back to your website after all required steps are completed.

As we handle all the required redirections to the various stakeholders for you, all you need to do is to post a form to a URL with the parameters and values required for the transaction.

URL for Test Transactions

```
https://test.ipg-online.com/connect/gateway/processing
```

You will get the production URL with your production account credentials.

When building a request, independently of the payment method, there are some mandatory fields that need to be included in every request for a Sale transaction.

Example of a form with the minimum number of fields:

```
<form method="post" action="https://test.ipg-online.com/connect/gateway/processing">
<input type="hidden" name="txntype" value="sale">
<input type="hidden" name="timezone" value="America/New_York"/>
<input type="hidden" name="txndatetime" value="%< %getDateTime() %"/>
```

```
<input type="hidden" name="hash_algorithm" value="HMACSHA256"/>
<input type="hidden" name="hashExtended" value="<% call createExtendedHash (
"13.00","840" ) %>"/>
<input type="hidden" name="storename" value="541234567" />
<input type="text" name="chargetotal" value="13.00" />
<input type="hidden" name="currency" value="840"/>
<input type="submit" value="Submit">
</form>
```

Other generic fields to be considered:

Field Name	Description, Possible Values and Format
checkoutoption	Set the value for this parameter to 'combinedpage' for a payment process where the payment method choice and the typical next step (for example, entry of card details or selection of bank) in consolidated in a single page.
paymentMethod	You can submit the parameter 'paymentMethod' in your transaction request relevant for a selected local payment method, as defined in Appendix V . If you do not submit this parameter, gateway will display a page to your consumer to choose from the payment methods that are supported for the combination of the consumer's country and the transaction currency.
bname	The consumer's name, for example, Albert Einstein. This is required for all Local Payments transactions. If you do not submit this field, a hosted page will be displayed to the consumer to capture the name.
bcountry	The consumer's country in Two Letter Country Code format, for example, U.S. for the United States or DE for Germany. The country is required for many Local Payments methods so we recommend to include it in every Sale transaction request. If you do not submit this field and the payment method requires it, a hosted page will be displayed with the country that we have identified based on IP address and the option to change the country, if not appropriate.

Many of the payment methods are available for customers coming from a certain country. In the scenarios where you use the hosted payment page for payment selection, the gateway can display to your consumers a hosted page with only these payment methods that are set up for your store and supported for the combination of the consumer's country and the transaction currency. This validation is done either based on the submitted billing country ('bcountry') or the customer's IP address.

See below an example of a hosted payment page in the checkout option 'combinedpage', where the country is pre-set to 'Germany' based on the customer's IP address but still it can be changed through a dedicated drop-down, where else the payment methods are limited based on the combination country/currency.

When building a request for a specific payment method, a part from the mandatory fields required for Sale transaction and some generic fields to be considered, you might also have to include some specific fields in your transaction request.

The payment method specific fields to be considered:
(M)=Mandatory (O)=Optional

Field Name	Relevant for	Description, Possible Values and Format
nationalId	Boleto Bancário (M) Santander (M) Santander Cash (M) Trustly (O)	Consumer's National ID (up to 30 characters)
customerid	Boleto Bancário (M) Santander (M) Santander Cash (M) Trustly (M)	Unique reference to identify the consumer
email	Boleto Bancário (M) Przelewy24 (P24) (M) SEPA Direct Debit (M) Santander (M) Santander Cash (M)	Consumer's email address
bbirthday	Boleto Bancário (O) Santander (O) Santander Cash (O)	Consumer's birthdate, format: DD.MM.YYYY
bic	giropay (O) SOFORT Banking (O)	Consumer's BIC – Business Identifier Code (eight or 11 digits)
iban	SEPA Direct Debit (M)	Consumer's IBAN – International Bank Account Number (22 digits)
mandateDate	SEPA Direct Debit (M)	
mandateReference	SEPA Direct Debit (M)	
mandateType	SEPA Direct Debit (M)	
mandateUrl	SEPA Direct Debit (M)	

mobileMode	Alipay (O)	You can submit this parameter with the value 'true' to enable Alipay for mobile web That is: the mobile enabled variant of Alipay.
phone	Przelewy24 (P24) (O)	Consumer's phone number
language	WeChat Pay (O)	Locale identifier for the payment page

Initiating a Return Transaction

When Return is supported for a selected local payment, you can initiate a Return transaction with a reference to the Transaction ID of the original Sale transaction to the API Web Service. Please see details in the Integration Guide for the Web Service API, chapter Generic Transaction Type for Voids and Returns.

There is the limit for the amount of Return transaction to a maximum of 100 000 either EUR or USD, which are the only currencies that are applicable for these limit for the moment. Returns using other currencies will not be limited.

Options for SEPA Direct Debit

When you manage SEPA Direct Debit mandates on your side you can use these in combination with the Local Payments offering by submitting the reference and date of the mandate as well as a link to the mandate itself. This is especially useful in cases where you have a large number of mandates on file from previously used solutions and want to continue to use these mandates.

Single Payment or Recurring Payment

Field Name	M/O	Description
email	O	Consumer's email address
iban	M	Consumer's IBAN – International Bank Account Number (22 digits)
mandateType	O	Sequence type of Direct Debit, defaults to 'single' Values: single – Direct Debit is executed once firstCollection – First Direct Debit in a series of recurring recurringCollection – Follow-up Direct Debit in a series of recurring finalCollection – Last Direct Debit in a series of recurring
mandateReference	M	To be populated with the mandate reference
mandateDate	M	To be populated with the initial mandate signature date
mandateUrl	M	To be populated with the valid URL of the SEPA mandate to enable the Risk and Compliance department to access the details

When you do not want to manage the SEPA Direct Debit mandates on your side, you can instead use the **out-of-box** solution offered by Fiserv. Upon receiving the valid transaction request, the gateway displays a hosted page to your customer with the mandate text and assigned mandate reference. As part of the gateway's response, you receive the mandate reference and mandate date, which have to be used in case of the subsequent payments under this mandate.

Single Payment or First Payment in Recurring Series

Field Name	M/O	Description
email	M	Consumer's email address
iban	M	Consumer's IBAN – International Bank Account Number (22 digits)

mandateType	O	Sequence type of Direct Debit, defaults to 'single' Values: single – Direct Debit is executed once firstCollection – First Direct Debit in a series of recurring
-------------	---	---

Follow-up Payments in Recurring Series

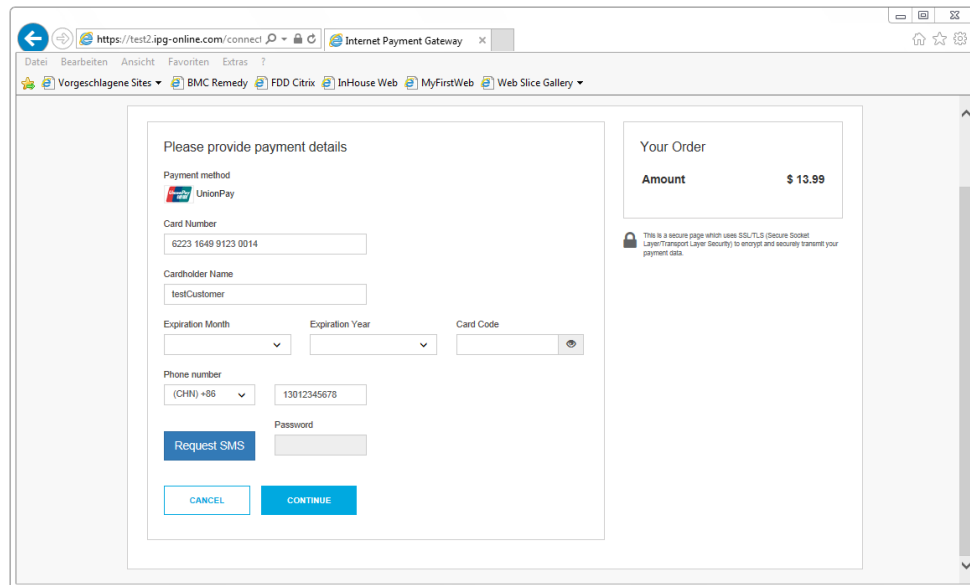
Field Name	M/O	Description
email	M	Consumer's email address
iban	M	Consumer's IBAN – International Bank Account Number (22 digits)
mandateType	M	Sequence type of Direct Debit Values: recurringCollection – Follow-up Direct Debit in a series of recurring finalCollection – Last Direct Debit in a series of recurring
mandateReference	M	To be populated with the mandate reference from the response
mandateDate	M	To be populated with the initial mandate signature date from the response

Appendix XI – UnionPay SecurePlus

Refer to the following information when your store is enabled for UnionPay SecurePlus.

SecurePlus is a part of the UnionPay Online Payments (UPOP) eCommerce payment solution designed by UnionPay for merchants who want to reduce the risk of fraudulent transactions, similar to 3D Secure.

When enabling your store for UnionPay SecurePlus, you would have to provide the UPOP MID specific in order request UnionPay to verify enrolment and to send a SMS code to your customers (as the card holders). However, you can also decide to allow your consumers to skip authentication, if you are happy to hold the responsibility of transactions without the security check.



The generic fields to be considered:

Field Name	Description, Possible Values and Format
paymentMethod	You can submit the parameter 'paymentMethod' in your transaction request for UnionPay as defined in Appendix V . If you do not submit this parameter, gateway will display a page to your consumer to choose from the payment methods activated for your store.
bname	You can submit the consumer's name (cardholder's name) in your transaction request. In some cases, when integration the checkout option 'combinedpage', the consumer's name might be required as a mandatory parameter. If you do not submit this field, gateway will display a page to your consumer to capture the name.
phone	<p>You can submit the consumer's phone number in your transaction request only as digits limited to: 4–15 digits and without the phone country code extension, which is set to +86 by default. If you do not submit this field, a hosted page will be displayed to the consumer to capture the phone and allow him to change the phone country code extension, when applicable.</p> <p>The phone is mandatory when going through security check since it is the phone number that is checked against the card number unless you are happy to hold the responsibility of transactions without the security check and your store is configured accordingly to skip this authentication then your customer would be able to perform a credit card transaction, where no phone number would be needed.</p>

You can also consider integrating UnionPay SecurePlus through the gateway's Web Service API. See the further information in the Integration Guide for the Web Service API.

Appendix XII – China Domestic

Refer to the following information when your store is enabled for China Domestic processing.

The China Domestic solution includes: China UnionPay and Alipay with a redirection of the consumer to pages in Chinese language providing your customers with a familiar shopping experience.

Initiating a Sale Transaction




A Sale transaction requires a direct interaction with the consumer who needs to be redirected to the payment method's screens and back to your website after all required steps are completed.

As the gateway handles all the required redirections, all you need to do is to post a form to a URL with the parameters and values required for a Sale transaction.

When building a request for China Domestic a part from the mandatory fields you will also need to include some specific fields in your transaction request.

The payment method specific fields to be considered:

(M)=Mandatory (O)=Optional

Field Name	Relevant for	Description, Possible Values and Format																					
item1	aliPay_domestic (M) CUP_domestic (M)	<p>Submit exactly one line item parameter with four (4) property values in the following format:</p> <p>id;description;quantity;item_total_price</p> <p>Transaction request without a line item or with multiple line items will be declined.</p> <p>Example: 100018;The Hobbit;1;3.50</p> <table border="1"> <thead> <tr> <th>Position</th><th>Property</th><th>Description</th></tr> </thead> <tbody> <tr> <td></td><td></td><td>Product code (编码Code) from "Product category list"</td></tr> <tr> <td></td><td></td><td> Productcatalog_3.3.xlsx</td></tr> <tr> <td>1</td><td>id</td><td></td></tr> <tr> <td>2</td><td>description</td><td>Product name</td></tr> <tr> <td>3</td><td>quantity</td><td>Quantity of product(s)</td></tr> <tr> <td>4</td><td>item_total_price</td><td>Product price</td></tr> </tbody> </table>	Position	Property	Description			Product code (编码Code) from "Product category list"			 Productcatalog_3.3.xlsx	1	id		2	description	Product name	3	quantity	Quantity of product(s)	4	item_total_price	Product price
Position	Property	Description																					
		Product code (编码Code) from "Product category list"																					
		 Productcatalog_3.3.xlsx																					
1	id																						
2	description	Product name																					
3	quantity	Quantity of product(s)																					
4	item_total_price	Product price																					
customerid	CUP_domestic (M)	Unique reference to identify the consumer																					
custom_domesticBankId	CUP_domestic (M)	Submit a bank identifier for reporting purpose in relation to promotions with local Chinese banks. Max length eight.																					

Example of a form with the minimum number of fields:

```
<form method="post" action=" https://test.ipg-online.com/connect/gateway/processing
">
<input type="hidden" name="full_bypass" value="true">
<input type="hidden" name="txntype" value="sale">
<input type="hidden" name="timezone" value="Asia/Hong_Kong"/>
<input type="hidden" name="txndatetime" value="<% getDateTime() %>"/>
<input type="hidden" name="hash_algorithm" value="HMACSHA256"/>
```



```
<input type="hidden" name="hashExtended" value="<% call createExtendedHash(  
"13.00","978" ) %>"/>  
<input type="hidden" name="storename" value="4799500011057" />  
<input type="hidden" name="paymentMethod" value="aliPay_domestic"/>  
<input type="text" name="chargetotal" value="13.00" />  
<input type="hidden" name="currency" value="156"/>  
<input type="hidden" name="item1" value="100018;The Hobbit;1;3.50" />  
<input type="submit" value="Submit">  
</form>
```

Appendix XIV – Korea Domestic

Refer to the following information when your store is enabled for Korea Domestic processing.

Initiating a Sale Transaction

As the gateway handles all the required redirections, all you need to do is to post a form to a URL with the parameters and values required for a Sale transaction.

When building a request for Korea Domestic a part from the mandatory fields you will also need to include some custom fields in your transaction request.

The payment method specific fields to be considered:

(M)=Mandatory (O)=Optional

Field Name	M/O	Description, Possible Values and Format
paymentMethod	O	Set the value for this parameter to 'kps'
checkoutoption	M	Set the value for this parameter to 'combinedpage'
oid	M	Unique order ID, alphanumeric string (32 max)
customParam_kps_ItemInfo	M	Type of purchased item, alphanumeric string (1 max) Possible values are: <ul style="list-style-type: none"> '1': Goods '2': Online content
customParam_kps_CcProdDesc	M	Description of purchased items to be displayed on the KPS payment page, alphanumeric string (256 max)

Full or partial Returns can be done through the Virtual Terminal interface.

Appendix XV – Debit Disbursement

Refer to the following information only when you are operating in U.S. and your store is enabled to allow credit transaction processing.

Debit Disbursement (Visa OCT, Mastercard MoneySend) allows businesses to disburse funds in real-time, directly to a debit card. Faster payouts can increase loyalty and satisfaction, reduce costs for businesses. The Debit Disbursement solution is cheaper, faster, more convenient and more traceable than traditional payment methods. It facilitates payments and transfers such as:

- Fund disbursements by e-commerce marketplaces
- Government disbursements (such as VAT refunds)
- Forex and binary option trade payouts
- Affiliate and contractor payouts
- Expense reimbursements
- Corporate and manufacturing rebates
- Insurance claims

The functionality for disbursements can be used with Direct Post and hosted payment page integrations. It is also available for REST API originated transactions.

The funding source may be a credit card, debit card, prepaid card or bank account, but the receiving account must be a debit card. Note currently only Visa and Mastercard brand debit cards can be used as the recipient for debit disbursements.

For person-to-person payments (P2P) and P2PBankInit – Person to Person Bank Initiated, the merchant must perform the operation as two individual transactions, one for funding (Pull transaction to debit funds from sender) and one for disbursement (Push transaction to receive funds by receiver).

Disbursement types supported:

- P2P – Person to Person
- P2PBankInit – Person to Person Bank Initiated
- MerchDisb – Merchant Disbursement
- FundsDisb – Funds Disbursement
- Pay Roll Pension Disbursement
- MerchInitMT – Money Transfer – Merch Initiate

Pull transactions for getting funds from the sender can be done using the transaction type 'sale', while Push transactions for the disbursement to the receiver using the transaction type 'credit'.

When building a request for Pull transaction a part from the mandatory fields required for Sale transaction, you can also need to include some custom fields in your transaction request.

The payment method specific fields to be considered:

(M)=Mandatory (O)=Optional

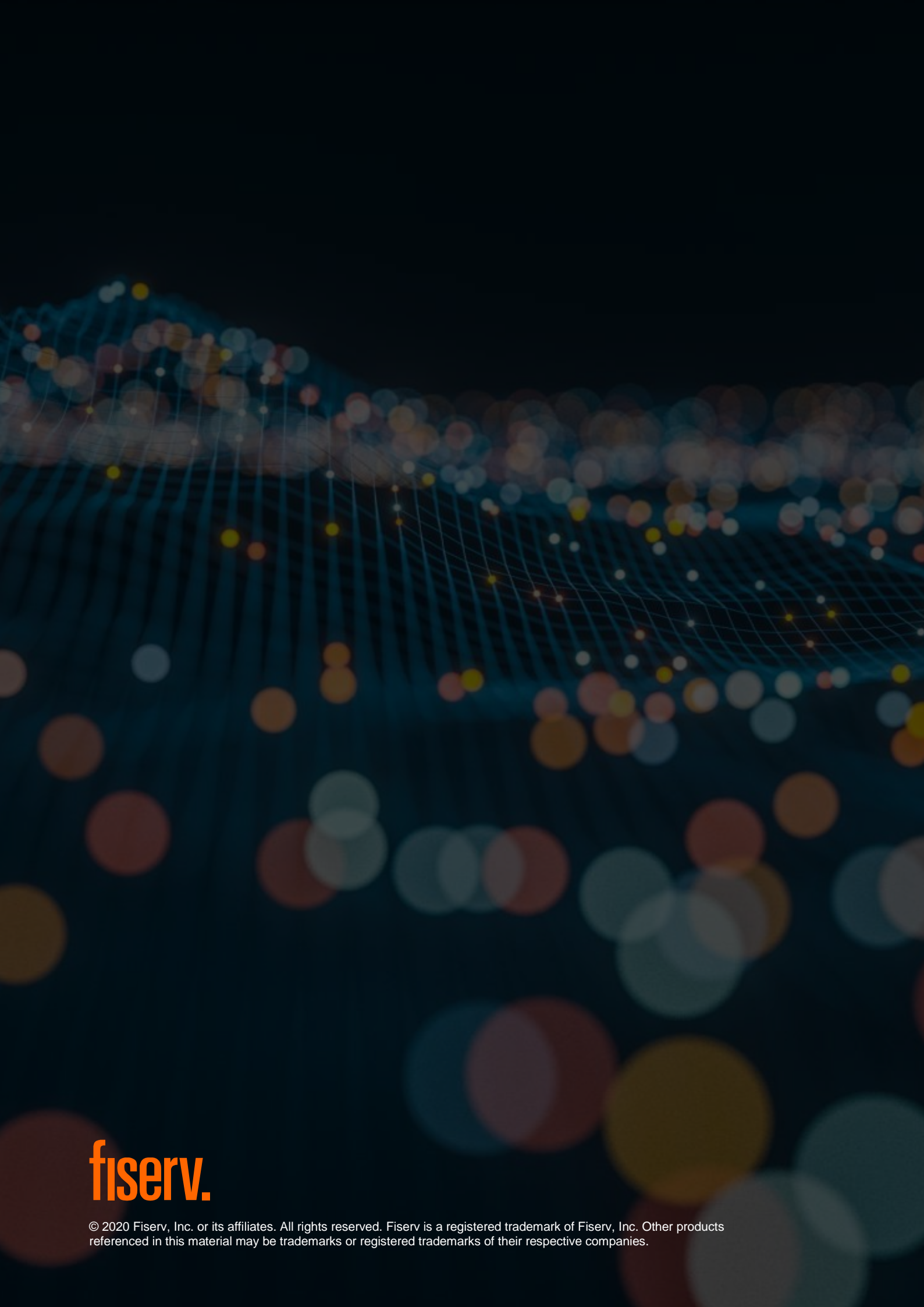
Field Name	M/O	Description, Possible Values and Format
Sender Information		
sdrName	O	Customer's Name

sdrAccount	O	Account Number
sdrReference	O	Reference Number
sdrAddr	O	Address
sdrCity	O	City
sdrState	O	State
sdrCountry	O	Country
sdrZip	O	Zip
sdrPhone	O	Phone
sdrBirthDate	O	Birthdate

When building a request for Push transaction a part from the mandatory fields required for Credit transaction, you will also need to include some fields in your transaction request. Note that the possibility to send 'credit' using the Connect interface is restricted and needs to be enabled for your store.

Field Name	M/O	Description, Possible Values and Format
Billing Information		
bname	M	Customer's Name
Receiver Information		
rAccountNumber	O	Account Number
rReferenceNumber	O	Reference Number

The transactions will be presented in the Virtual Terminal Reports as 'sale' for Pull transactions and as 'return' for Push transactions.



fiserv.

© 2020 Fiserv, Inc. or its affiliates. All rights reserved. Fiserv is a registered trademark of Fiserv, Inc. Other products referenced in this material may be trademarks or registered trademarks of their respective companies.